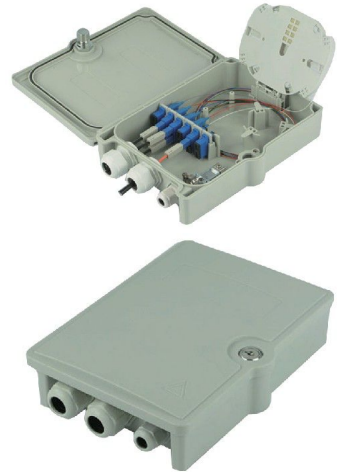


Description:

- Mechanical seal: Excellent sealing performance, reusable. Protection grade is IP 65.
- Installation method: Outdoor wall-mounted
- Feature:
 1. Professional terminal box is used in FTTH project and receives national patents.
 2. The box is designed to be flipped over with compact size.
 3. It is used to protect optical cable under $\Phi 12$, soft cable or $\Phi 3$ soft cable.
 4. 1:8SC or 1:16LC micro-splitter is applicable, and it also can be installed with SC double cores or 4 cores LC adapters.
 5. Maximum of LC adapter is 24 cores while 12 cores is the maximum for SC adapter.



Specifications

Model	FTTX-PT-A12
Box material	Polymer synthetic plastic
Fiber tray capacity	12
Size(mm)	258×186×61
Single Weight(kg)	0.9~1
Master carton size(mm)	570×415×355 (20 pcs)

--end--